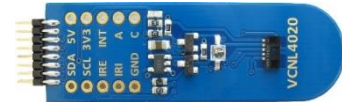
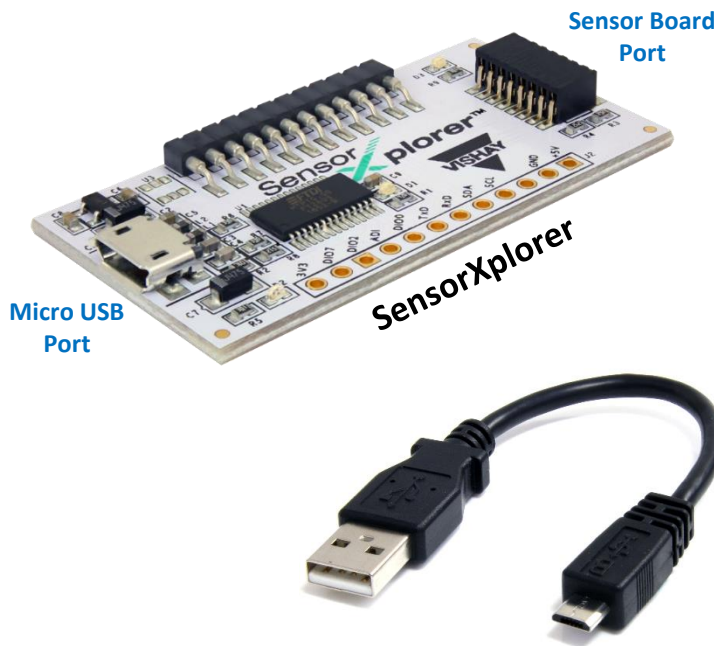


SensorXplorer™

Evaluation Kits for the Light to Digital Portfolio

SensorXplorer Hardware

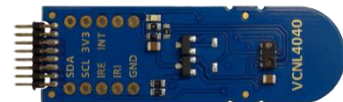
The SensorXplorer™ base station and individual sensor boards can be purchased from Arrow Electronics. The base station includes the board shown below and a USB to Micro USB cable. The sensor board plugs into the port shown. The USB cable plugs into a Windows-based PC.



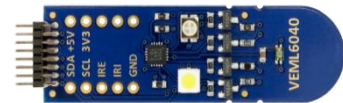
VCNL4020-SB; Short-range proximity



VEML6030-SB; Ambient light sensor



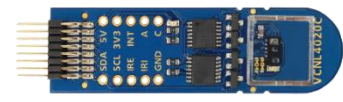
VCNL4040-SB; Short-range proximity



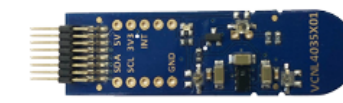
VEML6040-SB; RGBW sensor



VCNL6075-SB; UVA and B sensor



VCNL4020C-SB; Heart rate, SpO₂



VCNL4035X01-SB; Gesture with 2 IREds



VCNL4200-SB; Long-range proximity



VCNL4035X01-GES-SB; Gesture with 3 IREds

Evaluation Software

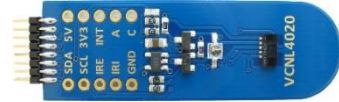
To download a sensor board software, go to <http://www.vishay.com/moreinfo/vcnldemokit/>. You will find an installation guide and software for each sensor. If you previously purchased our earlier SensorStarterKit, new evaluation software must be downloaded. However, the sensor boards will still function with the new base station.

To Order

The base station part number is "SensorXplorer". The sensor board part numbers are the sensor part number with the "-SB" suffix as shown to the right.

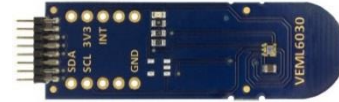
Image IDs

20881



VCNL4020-SB; Short-range proximity

26095



VEML6030-SB; Ambient light sensor

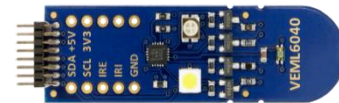
24892

25194



VCNL4040-SB; Short-range proximity

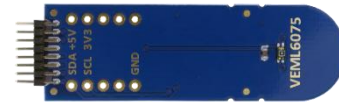
26097



VEML6040-SB; RGBW sensor

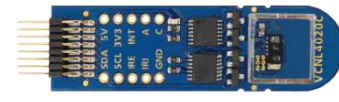
26659

(VCNL4035X01-SB)??



VCNL6075-SB; UVA and B sensor

(VCNL4200-SB)??



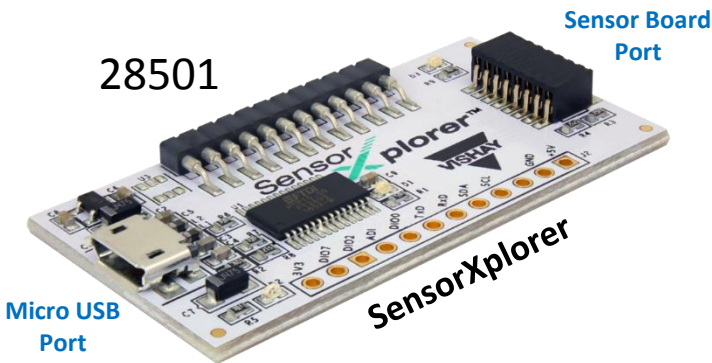
VCNL4020C-SB; Heart rate, SpO₂

27195



VCNL4035X01-SB; Gesture with 2 IREds

28501



Micro USB Port

Sensor Board Port

SensorXplorer



VCNL4200-SB; Long-range proximity



VCNL4035X01-GES-SB; Gesture with 3 IREds

