

Arrow Power Supply

Since 2014 with the acquisition of one of the biggest dedicated Power Distributor in EMEA, Arrow has decided to engage heavily into the power supply business.

Our mission is to provide best in class power engineering, sales, production, and logistics services to our customers and been constantly a trusted partner of growth for our key suppliers.



Arrow Custom Power Supply

Value Added Service, Design & Manufacturing

We help formulate your specific power supply requirements, working together in a trusted partnership. Arrow's detailed power knowledge helps to elevate your team throughout the entire power supply development process.

Our experts can assist in selecting and implementing the best customized power supply solution to meet your exact needs. We optimize our broad portfolio of power products during product development to enable your go to market strategy.



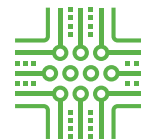
Value Add Design

- > Design
- > Development
- > Prototypes
- > Electrical and mechanical 3D modeling
- > Specialist EMC knowledge
- > Power knowledge across all markets



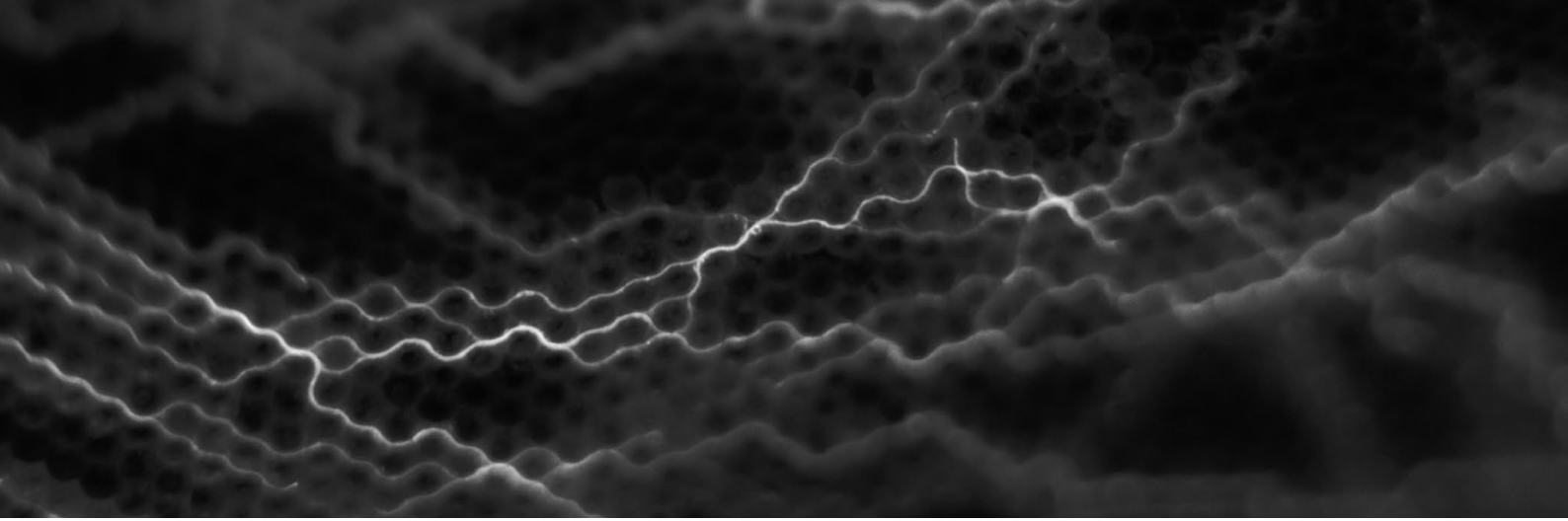
Value Add Service

- > Highly interactive customer focus
- > Supporting you throughout the project life cycle from concept to EOL
- > Power supply requirements specification help
- > Dedicated project management
- > Deep understanding and approvals knowledge
- > Regulatory standards compliance support



Value Add ISO9001 Manufacture

- > Full assembly
- > Testing configured to your exact needs
- > Using high quality processes
- > Incorporate your manufacturing process requirements
- > Manufactured to IPC standards



Work with a trusted partner to modify, assemble and configure

From simple modification to full discrete design, your team can leverage our:

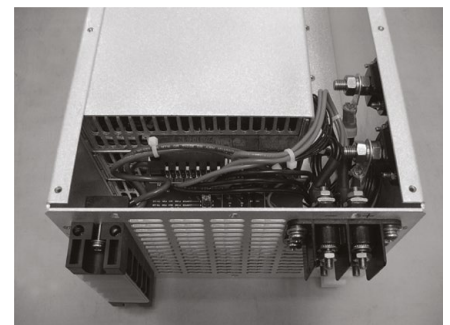
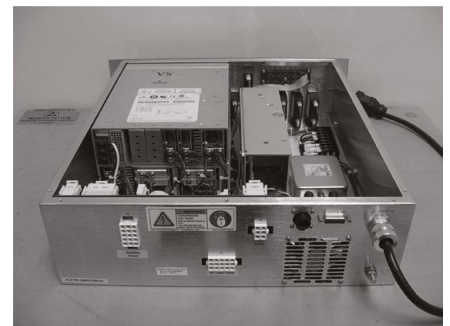
- > Electrical design engineers with extensive power knowledge
- > Mechanical design engineers
- > Thermal analysis and 3D modeling
- > Dedicated PCB schematic and layout staff
- > Production engineers for prototypes assembly & test
- > Test engineers
- > IPC soldering standards
- > Quality process and management

Arrow Custom Power Resources & Capabilities:

- > In-house ATE
- > In-house PCB prototype machine for quick-turn prototypes
- > In-house EMC Lab, EMC pre-compliance
- > In-house schematic, layout & PCB design software with 3D transformation capability
- > Environmental testing & thermal imaging
- > 3D mechanical CAD design proving and modeling

For complete assembly, building and testing, our on-site manufacturing offers:

- > Power supply assembly
- > Automated testing fixtures
- > Full chassis build PCB, Looms, EMI filters
- > Burn in and environmental test
- > Production engineers for prototypes assembly and test
- > Test engineers
- > IPC soldering standards
- > ISO9001 quality processes



Extend your reach with our specialized power supply modifications and modular assemblies, whether you are equipping a large horticulture application or fitting an MRI machine.

For more information, please visit arrow.com/manufacturing

Power Supply Coverage | Markets by Supplier

	Consumer	Industrial	Medical	Automation	Test & Measurement	Telecom	Broadcasting	Gaming	Security	Harsh Environments	Defense	Aerospace	Avionics	Railway	Automotive	Lighting	eMobility	Networking	Datacenter	IOT	Renewable Energy	
Arrow VAS	•	•	•	•	•	•	•	•	•	•	•	•	•	•	•	•	•	•	•	•	•	•
ABB Power ¹	•	•	•	•	•	•	•	•	•	•				•			•	•	•	•	•	•
Absopulse		•		•	•					•				•			•					•
Aimtec	•	•	•	•	•	•		•	•					•	•	•	•				•	•
Advanced Energy ²	•	•	•	•	•	•	•	•	•	•				•				•	•	•		
Bel Power	•	•	•	•	•	•	•	•	•	•	•		•	•	•		•	•	•	•	•	•
Cincon	•	•	•	•	•	•	•	•	•					•	•	•					•	•
Cosel	•	•	•	•	•	•	•	•	•	•					•	•					•	•
CUJ ³	•	•	•		•	•													•			•
Delta	•	•	•	•	•	•	•	•	•						•	•	•	•	•	•	•	•
Egston		•	•	•	•										•		•					•
EOS Power	•	•	•	•		•		•	•													
FSP Power ⁴	•	•	•					•									•	•	•			•
Gaia ⁵		•			•	•			•	•	•	•	•	•	•							
Meanwell	•	•	•	•	•	•	•	•	•	•				•	•	•	•	•	•		•	•
Moons																•						
MurataPS	•	•	•	•	•	•			•						•	•	•	•	•	•	•	•
Myrra	•	•																				
N2 Power		•	•			•	•	•	•										•			
Osram																•						
Recom	•	•	•	•	•	•		•	•					•	•	•	•				•	
SL Power	•	•	•													•						
TDK Lambda ⁵	•	•	•	•	•	•	•								•	•		•	•	•		•
Traco Power	•	•	•	•	•	•			•	•				•			•				•	
Vicor	•	•				•	•			•	•	•	•	•	•	•	•	•	•	•	•	•

1) Ge Critical Power, Lineage 2) Artesyn, Excelsys, Ultravolt 3) Aquired by Bel Power 4) 3Y Power Technology, Protek Power 5) Only in some regions

AC to DC Converters | Product Categories by Supplier

	EMC Filters	Open Frame	Enclosed	Encapsulated ACDC	Pcb Mount	Rugged ACDC	Din Rail	Linear	Desktop & Workstation	Compact PCI	Melcher Cassettes	Configurable	Adaptors	Hot Swap	Battery Chargers	Bulk Power	PFC Modules	Rectifiers	1U Front End	Power Shelves	Rack Mount 19"	UPS	3 Phase	Outdoor Led Drivers	Indoor Led Drivers	Line Driver	Inverters
Arrow VAS		•	•		•	•	•	•				•	•	•	•	•	•	•	•	•	•	•	•	•	•	•	•
ABB Power ¹		•	•	•	•	•	•		•					•	•	•		•	•	•	•	•	•				•
Absopulse		•	•			•	•								•				•		•	•	•				•
Aimtec	•	•	•	•	•								•											•	•		
Advanced Energy ²		•	•	•		•	•					•	•	•	•	•	•	•	•	•	•		•				
Bel Power		•	•			•	•	•		•	•	•		•	•	•		•	•	•	•		•				
Cincon	•	•	•	•	•								•		•									•	•		
Cosel	•	•	•	•	•	•	•					•			•	•	•	•	•	•	•						
CUI ³	•	•	•	•	•		•						•														
Delta	•	•	•	•	•	•	•		•				•	•		•			•	•	•			•	•		
Egston		•		•					•				•		•												
EOS Power		•	•												•						•						
FSP Power ⁴		•	•						•				•		•	•						•					•
Gaia ⁵					•	•											•										
Meanwell		•	•	•	•	•	•					•	•	•	•	•		•	•	•	•		•	•	•	•	•
Moons																								•	•	•	
MurataPS		•	•		•									•					•	•	•		•	•			
Myrra				•																							
N2 Power		•	•						•					•							•						
Osram																								•	•	•	
Recom	•	•	•	•	•		•													•				•	•		
SL Power		•	•		•								•							•				•			
TDK Lambda ⁵		•	•	•	•	•	•					•		•	•	•	•	•	•	•	•			•	•		
Traco Power		•	•	•	•	•	•																				
Vicor	•			•	•	•					•							•	•				•				

1) Ge Critical Power, Lineage 2) Artesyn, Excelsys, Ultravolt 3) Acquired by Bel Power 4) 3Y Power Technology, Protek Power
 5) Only in some regions

DC to DC Converters | Product Categories by Supplier

	Input filters	DCDC Low Power	Bricks	Encapsulated DCDC	Bus Converter	Point of load	Digital Point of load	Melcher Cassettes DCDC	Din Rail DCDC	Chassis Mount DCDC	Rugged DCDC	Compact PCI DCDC	Front End DCDC	Power Shelves DCDC	Customized DCDC	Outdoor Led Drivers	Indoor Led Drivers	eMobility	Datacenter
Arrow VAS	•	•	•	•	•	•	•		•	•	•		•	•	•	•	•		
ABB Power ¹	•	•	•		•	•	•				•		•	•	•				•
Absopulse	•		•		•				•	•	•		•		•				
Aimtec	•	•	•	•	•	•										•	•		
Advanced Energy ²		•	•	•	•	•	•				•		•			•			•
Bel Power	•	•	•	•	•	•	•	•	•	•	•	•	•	•	•			•	•
Cincon	•	•	•	•	•				•	•						•	•		
Cosel	•	•	•	•	•	•	•			•	•		•		•				
CUJ ³	•	•		•	•	•				•									
Delta	•	•	•	•	•	•							•	•		•	•		•
Egston	•																		
EOS Power																			
FSP Power ⁴																		•	•
Gaia ⁵	•	•	•	•	•	•	•				•		•		•				
Meanwell		•	•	•	•	•			•	•			•	•	•	•	•	•	
Moons																•	•		
MurataPS		•	•	•	•	•	•									•	•	•	•
Myrra	•	•	•																
N2 Power																		•	•
Osram																•	•		
Recom	•	•	•	•	•	•		•	•							•	•		
SL Power																			
TDK Lambda ⁵																			
Traco Power	•	•	•	•	•	•			•	•	•				•				
Vicor	•	•	•	•	•	•	•			•	•				•			•	•

1) Ge Critical Power, Lineage 2) Artesyn, Excelsys, Ultravolt 3) Aquired by Bel Power 4) 3Y Power Technology, Protek Power
5) Only in some regions

Are You Five Years Out?

Most people live in the present. The world of now. But a handful of us work in a unique world that doesn't quite exist yet—the world of Five Years Out.

Five Years Out is the tangible future. And the people who live and work there know that new technologies, new materials, new ideas and new electronics will make life not only different, but better. Not just cheaper, but smarter. Not just easier, but more inspired.

Five Years Out is an exciting place to be. So exciting that, once you've been there, it's hard to get excited about the present. Because we know what's coming is going to be so much better.

Five Years Out is a community of builders, designers, engineers and imaginers who navigate the path between possibility and practicality. Creating the future of everything from cars to coffeemakers.

Are you one of them? Then you're probably working with us.



Arrow Electronics, Inc.
Components
Frankfurter Straße 211
63263 Neu-Isenburg, Germany

Via Email

powersupply.gc.emea@arrow.com

Email us for answers to questions or to start a conversation.

Online

arrow.com

Visit our website for everything from the latest news to line card information.
