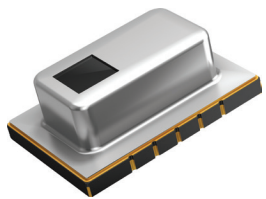


Sensor Solutions

Panasonic Sensor Solutions include a wide range of technologies which provide the flexibility to easily choose and implement a Sensor that is best suited for an application from a single, world class supplier. Panasonic built-in Sensors contribute to energy savings, safety and comfort. With high-functionality and high-performance, Panasonic has solutions for sensing and detecting rotational speed, rotational angle, position, flow, velocity, temperature, magnetism, currents and more. Panasonic Sensor products combine the latest technology with plug-and-play devices such as the Grid-EYE[®] Unit, the Grid-EYE[®] Evaluation Kit and more.



1-800-344-2112

na.industrial.panasonic.com

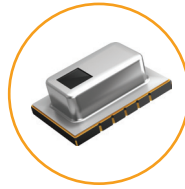
Grid-EYE® Thermopile Array Sensors

Series Name	 <p data-bbox="493 451 793 488">Grid-EYE High Gain Type</p>	 <p data-bbox="1052 451 1339 488">Grid-EYE Low Gain Type</p>	 <p data-bbox="1577 451 1927 488">Grid-EYE Narrow Angle Type</p>
Output Type	Digital I ² C		
Sensing Distance	7 Meters	7 Meters	4 Meters
Field of View	60°	60°	35.6°
Number of Detection Elements	8X8 (64)		
Supply Voltage	3.3 VDC or 5 VDC		5 VDC
Frame Rate	10 Frames Per Second or 1 Frame Per Second		
Accuracy	+/- 2.5°C	+/- 3°C	
Detection Temperatures	0°C to 80°C	-20°C to 100°C	
Operating Temperature	-20°C to 100°C		
Mounting Style	SMD		Module With 5 Pin Connector

Grid-EYE® Thermopile Array Solution

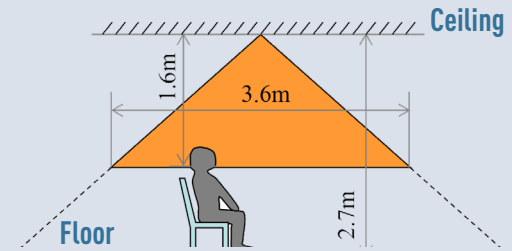
Series Name

Grid-EYE Unit



Detection Area

3.6 Meters² Detection Area At A Plane 1.6 Meters Away From The Sensor.



Accuracy for Position

+/- 500 mm

Number of People

8

Operating Temperature

0°C to 50°C

Number of Detection Coordinates

4X4 (16)

Communcation

RS485 Serial

Protocal

MODBUS









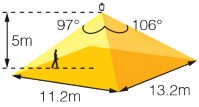
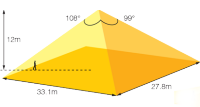
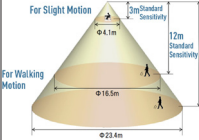
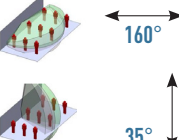
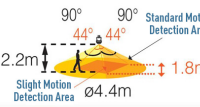
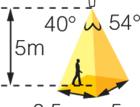
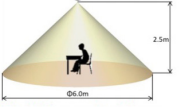
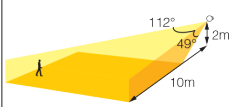
Supply Voltage

24 VDC

Passive Infrared Sensor (PIRs) By Current Consumption

Series Name	EKMC		EKMB		
Current Consumption	170µA		1µA	2µA	6µA
Output Type	Digital	Analog	Digital		
	High, Standard, Low	User Controlled	Standard		
Number of Detection Elements	4				
Max Operating Temperature	60°C				
Lens Color	White, Black, Pearl White				

Passive Infrared Sensor (PIRs) By Lens

Lens Type	 Standard	 Long Distance	 High Density, Long Distance	 Wide Field of View	 Saturn	 Spot	 Slight Motion	 Wall Mount
Max Sensing Distance	5 Meters	12 Meters	17 Meters	5 Meters	3 Meters	7 Meters	3.5 Meters	12 Meters
Field of View								
Number of Detection Zones	64	92	128	88 Front Detection, 16 Side Detection	36 Slight Motion, 48 Standard Motion	24	112	68

All Lenses Are Available in the EKMC and EMBC Series

	Long Distance Detection	Not Requiring Micro Controller	Low Power	Motionless Object	Moving Direction	Temperature Measurement
PIR (Through Hole)	✓	✓	✓			
Grid-EYE (Surface Mount)				✓	✓	✓

Accelerate Prototyping and Testing by Utilizing Panasonic's Grid-EYE® Evaluation Kit

Panasonic provides an easy-to-use Grid-EYE® Evaluation Kit, complete with software and documentation to get up and running FAST. In addition to an accurate surface temperature and hotspot detection, the Grid-EYE Evaluation Kit offers the capability to detect and track people and objects, even when they are not moving. By combining this Sensor technology with the “nanopower” *Bluetooth*® Smart Module PAN1740 Series by Panasonic, firmware and software on an Arduino-Compatible board, Panasonic is able to achieve a very easy-to-use development product for rapid application prototyping. Discover today why Panasonic Sensors are the premier choice.



na.industrial.panasonic.com/grideye-evalkit

Panasonic Industrial Devices Sales Company of America
Two Riverfront Plaza, 7th Floor, Newark, NJ 07102

800-344-2112 | na.industrial.panasonic.com